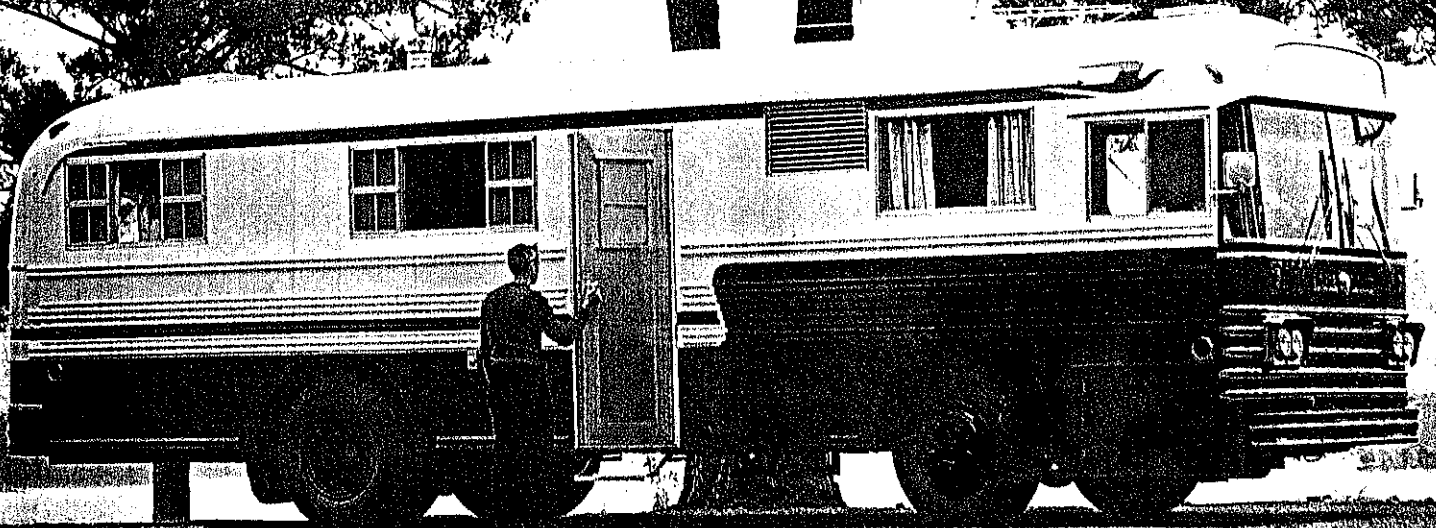


Bill  
Swiser



# BLUE BIRD TRANSIT HOME

*for wherever you travel or vacation*

**BLUE BIRD BODY COMPANY**

Fort Valley, Georgia • Brantford, Ontario • Mount Pleasant, Iowa

# BLUE BIRD TRANSIT HOME

## Standard Equipment Specifications and Features

**C  
H  
A  
S  
S  
I  
S**

**ENGINES:** Chevrolet 348, Ford 332 or GMC 401  
**TRANSMISSION:** 5-Speed SYNCHRO-MESH  
**BRAKES:** Vacuum over Hydraulic with a 3500 Cu. Inch. Tank and 556 Sq. Inch. of Lining Area  
**TIRES:** 900 X 20 - 10 Ply; Single Front, Dual Rear (Tube Type)  
**SUSPENSION:** Easy Ride Two Stage Progressive  
**SHOCKS:** Heavy Duty Direct and Double Action Piston Type  
**INSTRUMENTS:** Speedometer, Odometer, Ammeter, Fuel, Oil and Temperature Gauges  
**FUEL CAPACITY:** 40 Gal.  
**FRAME:** One Piece 9 $\frac{3}{8}$ " High of  $\frac{1}{4}$ " Steel

**B  
O  
D  
Y**

**OA LENGTH:** 370" (30' 10")  
**OA WIDTH:** 96"  
**OA HEIGHT:** 126" (10' 6")  
**INTERIOR HEIGHT:** 76"  
**WEIGHT:** 17,520 Fully Equipped  
**SLEEPING CAPACITY:** 6  
**PAINT:** Two Color Bake-On-Enamel  
**CONSTRUCTION:** All Steel  
**WINDOWS:** Awning and Picture Type  
**GLASS:** All Glass is Safety Glass  
**INSULATION:** High Density, Full Thick Fiberglass with Vapor Barrier in Body and Ceiling  
**MIRRORS:** Exterior Non-Glare 8 X 8 both right and left

### DRIVER'S COMPARTMENT:

Full Coverage Rear View Mirror  
Deluxe Full Bucket Driver's Seat, Four Way Adjustable  
Deluxe Full Bucket Companion Seat, Four Way Adjustable  
Insulated Engine Compartment  
Utility Table over Engine Hood  
Full Length Arm Rest for each Side  
Deluxe Sunvisor on Driver's Side

### LIVING AREA:

Full Length Gaucho Convertible to a Bed  
Sofa Bench  
Foam Cushioning on Sofa Bench and Gaucho  
Spacious Cabinets Overhead and under Gaucho and Sofa Bench  
Chest of Drawers  
Wardrobe with Shelf and Coat Rack

### DINING AREA:

Full Size Dinette Convertible to a Bed  
Hard Surface and Heat Resistant Dinette Top  
Storage Area under Dinette  
Overhead Cabinets Full Length  
Foam Cushioning with Fabric Upholstery

### BATH AREA:

Separate Shower and Toilet  
Large Wash Basin  
Vanity Mirror and Cabinet  
Light in Shower & Toilet  
Hard Surface and Heat Resistant Paneling in Shower  
Marine Type Toilet with 52 Gal. Holding Tank  
Full Length Mirror on Toilet Door

### KITCHEN AREA:

Double Bowl Sink  
Overhead and Under Counter Cabinet and Drawer Space  
Hot and Cold Mixing Faucets  
Three Burner Gas Stove  
Deluxe Four Cubic Ft. Gas Refrigerator  
Marr and Heat Resistant Counter Top

### BEDROOM AREA:

Two Full Size Single Beds  
Overhead Cabinets for ample Storage  
Under Bed Storage Area  
Spacious Wardrobe forward of Bedroom Area  
Night Stand between Beds

### GENERAL

Service Gauge Vinyl Floor  
Marine Plywood Subfloor  
58.5 Gal. Water Tank with outside Filler Spout  
12-Volt Electric Water Pump  
Safety Approved Gas Furnace, Thermostat control  
MHMA Approved Heat System  
Two No. 28 Gas Bottles Mounted for Convenient External access  
External Connection for Commercial Power  
Marr and Scuff Resistant Poly Clad Walnut Interior Paneling  
Sculptured Sound Deadening Acoustical Ceiling  
12-Volt and 110 Volt Lighting System  
MHMA Standards on all Wiring  
Landing Light Exterior  
Draperies

Because of Blue Bird's program of continuous improvement, we reserve the right to make changes in specifications without notice.

FOR FURTHER INFORMATION WRITE OR CALL:

TRANSIT HOME DIVISION - BLUE BIRD BODY COMPANY

FORT VALLEY, GEORGIA; BRANTFORD, ONTARIO; MOUNT PLEASANT, IOWA

# *Blue Bird Transit Home*

## 1964 Body Standard Equipment Specifications and Features

<b>OA LENGTH:</b>	370" (30' 10")
<b>OA WIDTH:</b>	96"
<b>OA HEIGHT:</b>	126" (10' 6")
<b>INTERIOR HEIGHT:</b>	76"
<b>WEIGHT:</b>	17,520 Fully Equipped
<b>SLEEPING CAPACITY:</b>	6
<b>PAINT:</b>	Two Color Bake-On-Enamel
<b>BUMPER:</b>	12" Rear and 8" Front (Heavy Duty)
<b>EXTERIOR PANELS:</b>	All Steel
<b>CONSTRUCTION:</b>	Unitized Riveted Construction
<b>WINDOWS:</b>	Awning and Picture Type
<b>GLASS:</b>	All Glass is Safety Glass
<b>EXTERIOR LIGHTS</b>	Stop and Tail Light, Dual Head Lights, ICC Clearance Lights
<b>REFLECTORS:</b>	Two Red Rear
<b>RUST PROOFING:</b>	All Panels are Rust Proof with Zinc Phosphate and Primed Before Assembly
<b>UNDERCOAT:</b>	Underside and between Walls are thoroughly Undercoated after Mounting
<b>INSULATION:</b>	High Density, Full Thick Fiberglass with Vapor Barrier in Body and Ceiling
<b>MIRRORS:</b>	Exterior Non-Glare 8 X 8 both right and left
<b>TOOLS:</b>	Lug Wrench, Lug Wrench Handle and 5-Ton Hydraulic Jack
<b>WINDSHIELD:</b>	Curved Safety Wraparound Windshield
<b>STRUCTURE:</b>	Box Section, One Piece Bow Construction

### **KITCHEN AREA:**

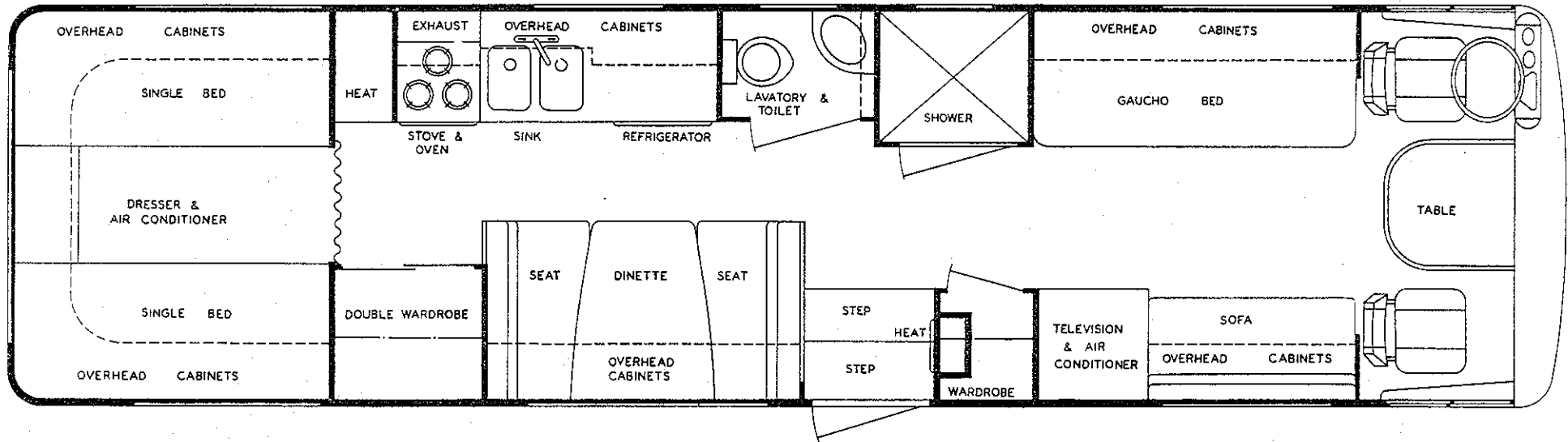
Double Bowl Sink  
Overhead and Under Counter Cabinet and  
Drawer Space  
Hot and Cold Mixing Faucets  
Three Burner Gas Stove  
Deluxe Four Cubic Ft. Gas Refrigerator  
Marr and Heat Resistant Counter Top

### **BEDROOM AREA:**

Two Full Size Single Beds  
Overhead Cabinets for ample Storage  
Under Bed Storage Area  
Large Picture Window at Rear, Tinted Safety  
Glass  
Spacious Wardrobe forward of Bedroom Area  
Night Stand between Beds

# Blue Bird Transit Home

## FLOOR PLAN



# ***Blue Bird Transit Home***

## **QUESTIONS AND ANSWERS ON THE BLUE BIRD TRANSIT HOME**

Q. How much Horse Power?

A. Ford has 205 H.P. at 3,800 RPM, Chevrolet has 220 H.P. at 4,400 RPM, and GMC has 210 H.P. at 3,400 RPM.

Q. Type of engine?

A. A heavy duty Chevrolet 348 engine which is a V-8, high torque engine. Displacement on this engine is 348 cu. in. Ford is a heavy duty Ford 332 V-8, high torque with displacement of 332 cu. in. GMC 401 V-6 engine with displacement of 401 cu. in.

Q. What type of chassis do we use in the Blue Bird Transit Home?

A. The chassis is a heavy duty chassis with easy-ride springs, heavy duty shocks and is manufactured by Blue Bird Body Company.

Q. Is this a reconditioned unit?

A. No, we are original equipment manufacturers and do not perform any reconditioning.

Q. What is the size of the alternator?

A. 60 amps — 12 volts.

Q. What is the tire size and type?

A. 900x20—10 ply tires, tube type. Single front and dual rear.

Q. What is the gas mileage on the Blue Bird Transit Home?

A. Eight miles per gallon depending on the driver, speed and road conditions.

Q. What is the cruising speed?

A. Up to 80 M. P. H. is obtainable.

Q. What type transmission?

A. A 5-speed is standard, but an Allison Powermatic with six forward and one reverse speeds with retarder to help brake on downgrades is available.

Q. How much does the gasoline tank hold?

A. Standard is 40 gal. tank, but two 60 gal tanks (120 gallons) which gives approximately 1,000 miles without refueling are available. A single 60 gal. is also available.

Q. What type of gasoline does the engine require?

A. Regular gasoline is specified for both engine and the optional power plant.

Q. What is the overall construction?

A. All riveted unitized steel frame with zinc phosphate rust proofing system.

Q. How is the Transit Home insulated—walls, ceiling, floor?

A. The floor is insulated with sound deadening and insulating material with 5/8" marine plywood and vinyl tile. All seams are completely sealed with automotive type sealer. Walls and ceiling have fiberglass insulation with a vapor barrier.

Q. How about park hook-up?

A. The Blue Bird Transit Home has full trailer park hook-up for electricity, water, and sewage; or it can be completely self-contained with optional equipment.

Q. What kind of floor tile do we use?

A. Service gauge vinyl.

Q. What is the interior height?

A. 76"

Q. Can I trail a boat or car?

A. The Blue Bird Transit Home is 30' 10" in length. Most compact cars could be towed within the 50 foot legal limit.

# **Blue Bird Transit Home**

## **DRIVER'S COMPARTMENT:**

Full Coverage Rear View Mirror  
Heavy Duty Windshield Wipers  
Deluxe Full Bucket Driver's Seat, Four Way Adjustable  
Deluxe Full Bucket Companion Seat, Four Way Adjustable  
Insulated Engine Compartment  
Utility Table over Engine Hood  
Two Large Ash Trays  
Full Length Arm Rest for each Side  
Deluxe Sunvisor on Driver's Side  
Emergency Brake, Interior Adjustable  
Fresh Air Intake  
Driver's Area Light

## **LIVING AREA:**

Full Length Gaucho Convertible to a bed  
Sofa Bench  
Foam Cushioning on Sofa Bench and Gaucho  
Spacious Cabinets Overhead and under Gaucho and Sofa Bench  
Chest of Drawers  
Reversible Fabric Upholstery on Gaucho and Sofa Bench  
Wardrobe with Shelf and Coat Rack  
Two Picture Windows

## **DINING AREA:**

Full Size Dinette Convertible to a Bed  
Hard Surface and Heat Resistant Dinette Top  
Storage Area under Dinette  
Overhead Cabinets Full Length  
Foam Cushioning with Fabric Upholstery

## **BATH AREA:**

Separate Shower and Toilet  
Large Wash Basin  
Vanity Mirror and Cabinet  
Light in Shower & Toilet  
Hard Surface and Heat Resistant Paneling in Shower  
Marine Type Toilet with 52 Gal. Holding Tank  
Obscure Windows in Toilet and Shower  
Full Length Mirror on Toilet Door

## **GENERAL**

Service Gauge Vinyl Floor  
Marine Plywood Subfloor  
58.5 Gal. Water Tank with outside Filler Spout  
12-Volt Electric Water Pump  
Safety Approved Gas Furnace, Thermostat control  
MHMA Approved Heat System  
Two No. 28 Gas Bottles Mounted for Convenient External access  
External Connection for Commercial Power  
Marr and Scuff Resistant Poly Clad Walnut Interior Paneling  
Sculptured Sound Deadening Acoustical Ceiling  
Rubber Covered Entrance Step  
12-Volt and 110 Volt Lighting System  
MHMA Standards on all Wiring  
Safety Locks on all Drawers  
Weather-Proof Convenience Outlets on the Exterior  
Landing Light Exterior  
Draperies  
Outside Table Hook-up

Because of Blue Bird's program of continuous improvement, we reserve the right to make changes in specification without notice.

# ***Blue Bird Transit Home***

- Q. How does the water system work?  
A. A fully automatic 12-volt water pump.
- Q. How many gallons does the water tank and septic tank hold?  
A. 58½ gallons on the water and 52.5 on the septic tank.
- Q. Are these rust proof?  
A. Yes.
- Q. Where can the septic tank be drained?  
A. It can be hooked up to the sewage system of a public park or trailer park with sewer hose.
- Q. Is this really a septic tank?  
A. No, it is a holding tank.
- Q. Does the water system work while driving?  
A. Yes.
- Q. Does the refrigerator operate while driving?  
A. Yes.
- Q. Where is the emergency exit?  
A. All windows are rubber mounted pop-out windows and can be kicked out for emergencies.
- Q. Will the air conditioning keep the vehicle cool?  
A. Under normal conditions, driving or parked, the air conditioning will maintain the recommended degree differential from the outside temperature.
- Q. What kind of glass is the Blue Bird Transit Home?  
A. All safety glass.
- Q. Can the electric power plant start automatically?  
A. It is available, but not recommended.
- Q. How long will a bottle of gas last?  
A. It is determined by many factors such as temperature, amount of cooking being done, etc. (The gas refrigerator uses very little gas.)
- Q. What are the advantages of the power plant?  
A. It provides a regular 110/220 volt system for lighting and appliances. This is a self-contained power generator (5 KW).
- Q. What type seats are in the driving compartment?  
A. Two deluxe sports car type bucket seats with foam cushions.
- Q. Are the front seats reversible?  
A. The driver's seat is stationary, but should you be at one location for an extended period, the companion seat can be reversed.
- Q. Can we have a larger refrigerator?  
A. No. The need for a larger refrigerator is generally milk. Experienced travelers use powdered milk or ice chests to hold additional supplies.
- Q. Since we do not have a spare, what happens when we have a flat tire on the front?  
A. Remove one of the outside rear and use it on the front until you can get to a station.
- Q. Can we have a double bed in the rear instead of twins?  
A. It is available, but space requirement make the double awkward to get into and make-up. It is not as practical as the twins.

# ***Blue Bird Transit Home***

- Q. Where can we service the running gear?  
A. You are provided with a service and warranty certificate. Claims must be approved by Blue Bird prior to adjustment. It can be serviced by a Ford, Chevrolet, or GMC Agency.
- Q. Where can we get service on appliances?  
A. Certificate of warranty on appliances and power generator are supplied with each unit. Major suppliers of appliances and authorized distributors are allowed to make adjustment.
- Q. Do we need a special type driver's license?  
A. Regular driver's license are all you need if you are using the vehicle for personal use.
- Q. What routes must we use when traveling?  
A. Since this is registered as a "House Car", you may use any route open to automobiles.
- Q. What is the rate on toll roads?  
A. This has been varying, but generally the rate is the same as it is for an automobile with a towed vehicle.
- Q. How much does a tag cost?  
A. This varies from state to state, but generally it carries the same rate as an automobile.
- Q. What about insurance?  
A. Usually it will carry the big car rate with the standard discount if you own a second car.
- Q. Are there any driving restrictions?  
A. The only restrictions known by us at this date is the restriction on driving through tunnels. No vehicle is allowed in some tunnels if it carries bottled gas.



# ***Blue Bird Transit Home***

## **TRANSIT HOME LIVING vs. TRAVEL TRAILER LIVING**

### **COMPARE CONVENIENCE:**

Towing the major problem with a trailer, is eliminated with a Blue Bird Transit Home. There is no bouncy and saggy rides. If you can drive a car, you will be able to handle the Transit Home with ease.

Passengers can enjoy the luxury of riding, eating, sleeping, bathing, and all while traveling. Because a Blue Bird Transit Home is self-propelled, it is legal and safe to be within the home while traveling. No state or national law allows a passenger to be in the towed vehicle.

Handling the Blue Bird Transit Home does not require special skill. If you can drive a car, you will find that parking and backing up a Transit Home is never a problem. Jackknifing, the dangerous thing where the trailer pushes you, is eliminated on a Transit Home.

Traveling, getting ready to travel, getting ready to stay a spell are simple in a Blue Bird Transit Home. There is no exterior hitching, wire connection or chains. Deciding to go will be more work than moving a Blue Bird Transit Home. Overloading and balanced loading will not worry you when you have decided to change the scenery.

### **COMPARE COST:**

To have the same amount of living area, a travel trailer would need to be 36 feet long.

No automobile is designed specifically as a towing vehicle. Some have been "beefed" up to sell in that capacity, but some companies will not warrant the automobile if it used for towing.

Add the expense of an automobile heavy enough to tow a vehicle of this capacity and the trailer with the equal floor space.

There is no special fee for towing and no auxiliary license with a Transit Home.

Consider the repair expense of a vehicle designed to power a Transit Home and the expense of the towing vehicle and trailer.

You can compare a Transit Home with a travel trailer just as you can compare a penthouse with a one-room apartment. You can also live in either one, but that is where the similarity ends.

## **BLUE BIRD TRANSIT HOME LIVING vs. MOTEL LIVING**

### **COMPARE CONVENIENCE:**

Retire in the same bed every night, use the same bath, and sit down at the same table to eat. Never be bothered with the constant changing of these ways of life.

No check-out time, take the road when you're ready; go where you like and stay as long as your fancy. One need not be rushed or have to wait for long periods in order to make schedules.

# *Blue Bird Transit Home*

No bags to pack and unpack. Think of the baggage it would take to equal the wardrobes and the many drawers in the Transit Home. Wrinkled clothes and lost baggage are eliminated when you drive your Transit Home.

No reservation worries. There is never a "No Vacancy" sign when you use your Transit Home.

How many places would we like to see that do not have accommodations. You will be able to visit these out-of-the-way places and stay as long as you please in a Transit Home.

## **COMPARE COST:**

Compare the cost of an average motel or hotel with a cost of a mobile home park. Parking with all utilities costs about \$1.00 to \$1.50 per night.

Compare the cost of eating out every meal.

Compare the cost of land or air travel along with the taxi and handling charge for your baggage.

Tipping alone would probably pay for the night in a travelers park.

QUESTIONS AND ANSWERS ON THE BLUE BIRD TRANSIT HOME.

- Q. How much Horse Power?  
A. Ford has 205 H. P. at 3800 or Chevrolet has 220 H. P. at 4400.
- Q. Type of engine?  
A. A heavy duty Chevrolet 348 engine which is a V-3, high torque engine. Displacement on this engine is 348 cu. in. Ford is a heavy duty Ford 332 V-6, high torque with displacement of 332 cu. in.
- Q. What type of chassis do we use in the Blue Bird Motor Home?  
A. Chassis is a heavy duty bus chassis with easy-ride springs, heavy duty shocks and is manufactured by Blue Bird Body Company.
- Q. What is the size of the alternator?  
A. 60 amps - 12 volts.
- Q. What type of carburetor do we use?  
A. Four-barrel, downdraft type for better mileage.
- Q. What is the tire size and type?  
A. 990 x 20 -10 ply tires, tube type. Single front and dual rear.
- Q. What is the gas mileage on the Blue Bird Motor Home?  
A. Eight miles per gallon depending on the driver, speed and road conditions.
- Q. What is the cruising speed?  
A. Up to 80 M. P. H.
- Q. What type transmission? A 5-speed is standard, but an Allison Powermatic with six forward and one reverse speeds with retarder to help brake on downgrades is available.
- Q. How much does the gasoline tank hold?  
A. Standard is 40 gal., but two, 60 gal. tanks (120 gallons) which gives approximately 1000 miles without refueling are available. A single 60 gal. is available
- Q. What type of gasoline does the engine require?  
A. Regular gasoline is specified for both engine and power plant.
- Q. What is the overall construction?  
A. All welded unitized steel frame with zinc phosphate rust proofing system.

- Q. How insulated---walls, ceiling, floor?  
A. Floor is insulated with sound deadening and insulating material with 5/8" marine plywood and vinyl tile. All seams are completely sealed with automotive type sealer. Walls and ceiling have fiberglass insulation with vapor barrier.
- Q. How about park hook-up?  
A. Blue Bird has full trailer park hook-up for electricity, water, and sewage; or can be self contained with optional equipment.
- Q. What kind of floor tile do we use?  
A. Service gauge vinyl terrazo.
- Q. What is the interior height?  
A. 76"
- Q. Can I trail a boat or car?  
Our Transit Home is 30' 10" in length. Most compact cars could be towed within the 50 legal limit.
- Q. How does the water system work?  
A. A fully automatic 12 volt water pump.
- Q. How many gallons does the water tank and septic tank hold?  
A. 58-1/2 gallons on the water and 52.5 on the septic tank.
- Q. Are these rust proof?  
A. Yes, water tank is of rust proof aluminum and the septic tank is stainless steel.
- Q. Where can the septic tank be drained?  
A. Can be hooked up to the sewage system of a public park or trailer park with sewer hose.
- Q. Is this really a septic tank?  
A. No, it is a holding tank.
- Q. Does the water system work while driving?  
A. Yes.
- Q. Does the refrigerator operate while driving?  
A. Yes.
- Q. How is the emergency exit used?  
A. All windows are rubber mounted pop-out windows.

- Q. Will the air conditioner keep the vehicle cool?  
A. Under normal conditions, driving or parked, the large 15,000 BTU air conditioner will maintain the recommended degree differential from outside temperature.
- Q. What kind of glass is in the Blue Bird Motor Home?  
A. All safety glass.
- Q. Can electric power plant start automatically?  
A. It is available, but not recommended.
- Q. How long will a bottle of gas last?  
A. This is almost like saying "How long will the ink in your pen last?" It is determined by many factors such as temperature, amount of cooking being done. (The gas refrigerator uses very little gas.)
- Q. What are the advantages of the power plant?  
A. It provides regular 110 V/220 V system for lighting and appliances. This is a self contained power generator (5KW).
- Q. What type seats are in the driving compartment?  
A. Two deluxe sports car type bucket seats with foam cushions.
- Q. Can we have a larger refrigerator?  
A. No. The need for a larger refrigerator is generally milk. Experienced travelers use powdered milk or ice chests to hold additional supplies.
- Q. Since we do not have a spare, what happens when we have a flat on the front?  
A. Remove one of the outside rear until you can get to a station.
- Q. Can we have a double bed in the rear instead of twins?  
A. It is available, but space requirement make the double awkward to get into and make up. It is not as practical as the twins.
- Q. Where can we service the running gear?  
A. You are provided with a service certificate and warranty. Claims must be approved by Blue Bird prior to adjustment. It can be serviced by a Ford, Chevrolet, or GMC Agency.
- Q. Where can we get service on appliances?  
A. Certificate of warranty on appliances and power generator are supplied with each unit. Major suppliers of appliances and authorized distributors are allowed to make adjustment.

- Q. Do we need a special type driver's license?  
A. Regular Driver's license are all you need if you are using the vehicle for personal use.
- Q. What routes must we use when traveling?  
A. Since this is registered as a "House Car", you may use any route open to automobiles.
- Q. What is the rate on toll roads?  
A. This has been varying, but generally the rate is the same as it is for an automobile with a towed vehicle.
- Q. How much does a tag cost?  
A. This varies from state to state, but generally it carries the same rate as an automobile.
- Q. What about insurance?  
A. Usually it will carry the big car rate with the standard discount if you own a second car.
- Q. Are there any driving restrictions?  
A. The only restrictions known by us at this date is the restriction on driving through tunnels. No vehicle is allowed in some tunnels if it carries bottled gas.